



PEARL ELECTRIC CO., LTD.

Address: No.118, Donghuan Road, Donghuan Street, Panyu District, Guangzhou City, China

Tel: +86-20-22626690; +86-20-22626633 Fax: +86-20-22626999

Email: oversea@pearlelectric.com

Website: <http://www.pearlelectric.com/zh-EN/introduce.asp>



About Pearl Electric

01

Pearl Electric Co., Ltd. was established in 1958 and is located in Panyu District, Guangzhou City, China. It is about two-hour's drive away from Hong Kong International Airport and one-hour's drive away from Guangzhou Baiyun International Airport.

02

Occupying a land area of about 100,000 square meters and a factory area of about 70,000 square meters, with more than 660 employees.

03

Pearl Electric designs, manufactures and supplies:

- 35kV and below-35kV dry-type transformer
- 35kV and below 35-kV oil-immersed distribution transformer
- 230kV and below-230kV oil-immersed power transformer
- 35kV and below-35kV Substation Transformer
- Reactors and other power transformation and transmission equipment

04

After more than half century's development, Pearl Electric has now grown into an enterprise of:

Top brand in China for Class 1E dry-type transformer of nuclear power plant application
Industry leader for new-energy application substation transformer and energy-conservation transformers.



35kV and below-35kV
Cast-resin Dry-type Transformer



35kV and below-35kV
Oil-immersed Distribution Transformer



230kV and below-230kV
Oil-immersed Power Transformer



35kV and below 35kV
Substation Transformer



Reactors

Research & Deign Capability

Committee Member of China National Technical Committee on Transformers Standardization Administration of China

Committee Member of National Technical Committee on Insulating Material Standardization Administration of China

Committee Unit of Editorial Board for the Journal of Transformer

Government-certified State-level Hi&New Technology Enterprise

Government-approved Post-doctoral Workstation

Guangdong Provincial Academician Workstation



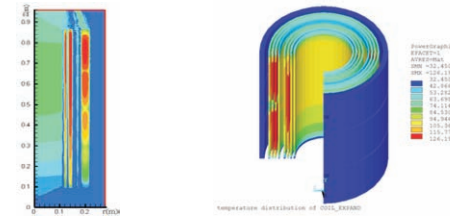
F1 Test

C2 Test

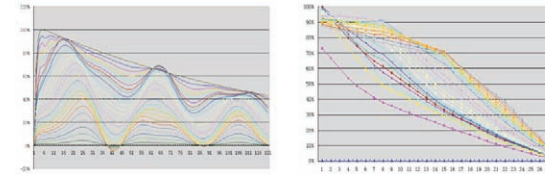
E2 Test

Number of R&D engineers takes up 30% of the total employees, among which are 1 engineer with doctor degrees, 6 engineers with master degrees and 9 engineers as government-certified senior engineer.

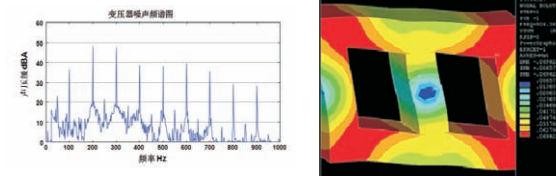
With state-of-the-art approaches for design and research work:



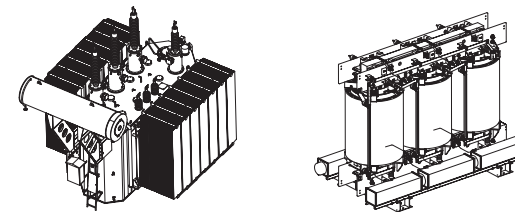
Temperature Field Calculation



Lightning Impulse Analysis



Transformer Noise and Vibration Analysis



3D Simulation Design



Manufacturing



Cast-resin Dry-type Transformer Manufacturing



Oil-immersed Distribution Transformer Manufacturing



Substation Transformer Manufacturing



Oil-immersed Power Transformer Manufacturing

Test Capability

For all products designed and manufactured, Pearl Electric could fulfill all the routine, type and special test items specified by IEC standards, with the only exception of sudden short circuit test.

Pearl Electric is equipped with four test bays: test bay for dry-type transformer, test bay for oil-immersed transformer, test bay for substation transformer and test bay for special test.



Test Bay for Dry-type Transformer



Test Bay for Oil-immersed Power Transformer



Lightning Impulse Generator



63MVA, 110kV Transformer under Short-circuit Test in Third-party Independent Test Lab



Pearl Electric also has special test laboratories and offices for various special test items

Environmental Test Laboratory, Electrical Laboratory, Mechanical Laboratory, Physical & Chemistry Laboratory and Metering Inspection Office.



Test Chamber for Noise and Partial Discharge Measurement



Environmental Test Laboratory



Physical & Chemistry Laboratory

Quality Health and Safety Environment



ISO 9001 : 2015
Quality Management System Certificate



ISO 14001 : 2004
Environmental Management System
Certificate



OHSAS 18001 : 2007
Occupational Health and Safety Management
System Certificate

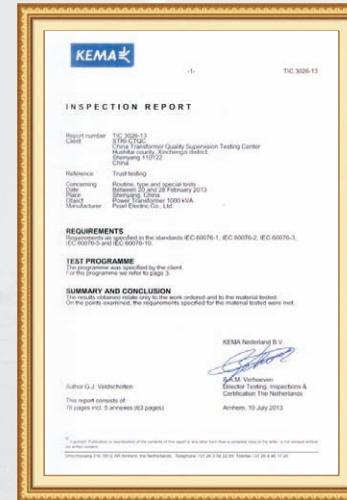
Major Product Test Report



KEMA Test Report for Dry-type
Transformer



CE Test Report for Dry-type
Transformer



KEMA Test Report for Oil-immersed
Transformer



CE Test Report for Oil-immersed
Transformer



CTQC Test Report for 63MVA, 110kV Oil-immersed Power Transformer



CTQC Test Report for 29.5MVA, 230kV Oil-immersed Power Transformer

More Test Reports Available

For all products developed and supplied by Pearl Electric, type and special tests have been carried out in internationally-recognized independent test lab, and test reports have been obtained, including:

- C2/E2/F1 test report for cast-resin dry-type transformer
- Aging test report for cast-resin dry-type transformer
- Aseismatic report for cast-resin dry-type transformer
- Type and special test reports for class 1E dry-type transformer for nuclear power station application.
- Type and special test reports for various traction/excitation transformers
- Type and special test reports for amorphous alloy core dry-type and oil type transformers
- Test reports for three-proof (salt-fog, mildew, humid-heat) performance.
- Type and special test reports for different types of pre-fabricated substation/pad-mounted transformer/mini-sub/ Kiosks
- Type and special test reports for transformers of wind farm/solar plant application.
- Certificates for energy-conservation product

Localized Technical Backup and Aftersales

To provide localized customer service is the basic ideology in Pearl Electric's overseas marketing strategy.



Southeast Asia Region

Company: EPE Transformer Sdn. Bhd.

Address: Lot 6, Jalan Permata 2, Arab Malaysian Industrial Park, 71800 Nilai, Malaysia

Contact: KY LEONG (Phone: 0060355694090 ; Email: kyleong.ablecon@gmail.com)

Sub Saharan Region

Company: ArmCoil Afrika (Pty.) Ltd.

Address: Unit 3, Prestige Park, 127 Albertina Sisulu Road, Technikon, Roodepoort, Johannesburg, Gauteng,

South Africa

Contact: Morne Bosch (Phone: 0027117632351; Email: morneb@armcoil.co.za)

Brazil and North American Region

Company: TJ Transformers Jundiaí

Address: Av. Antonio Pincinato, 78, Jardim Guanabara, Jundiaí, Sao Paulo, Brazil

Contact: Luiz Donizete Simiao (Phone: 00551145856116;

Email: simiao@transformadoresjundiai.com.br)

Egypt and North African Region

Company: EL SERAFY Engineering LLC

Address: 202,28th St, Shuweifat, Fifth Settlement, Cairo, Egypt.

Contact: Ashraf El Serafy (Phone: +20-2-25604202, Email: info@Elserafy.com)

LOOKING FOR LOCAL AGENT/DISTRIBUTOR

Sales

Since its inception, Pearl Electric has always been devoting itself to the researching and manufacturing of power transformation and transmission equipment. Pearl Electric has won extensive praises among customers with its high level professional technology standard, outstanding product quality, thoughtful service and sincere cooperation with partners. The products have been sold throughout China and all over the world.

Industrial Users



Power Transformation & Transmission



Power Generation



Sales to the whole world

Asian: Hongkong, Macao, Singapore, Japan, Nepal, Malaysia, Vietnam, Laos, Mongolia, Myanmar, Cambodia, India, Pakistan, Bangladesh, Philippines, Indonesia, Tajikistan, Kazakhstan, United Arab Emirates, Iran and Syria

Europe: Russia, Italy, Turkey, Romania

North America: United States

South America:

Brazil, Chile, Argentina, Ecuador, Costa Rica, Venezuela, Peru

Africa:

South Africa, Zambia, Kenya, Egypt, Nigeria, Cameroon, Ethiopia, Algeria

